

2.3. Making real-time measurements

Real time measurements for all sensors connected to an Em50 data logger can be obtained by clicking on the “Scan” button in ECH2O Utility (or F7 on a computer keyboard). This is an important feature that can be used in a number of situations. For example, it can be used to test if a sensor is reading properly. By repeatedly clicking on the “Scan” button, changes in a variable of interest can be monitored using a sensor. The pop up window that opens when scans are taken can show both processed and raw real-time sensor readings (Figure 9). Scans taken this way are not stored by the logger.

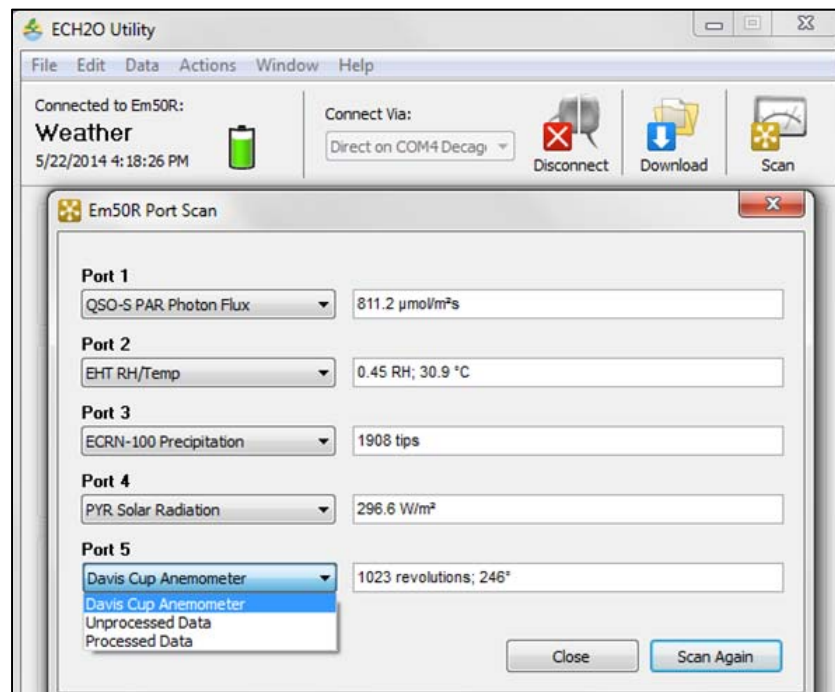


Figure 9. Scan window showing real-time sensor measurements.