

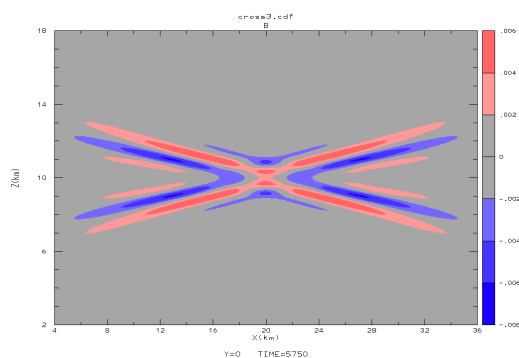
## 2 layer examples

- [Internal waves in a tank](#)
  - <https://www.youtube.com/watch?v=U2lq8TpLqR4>
- [Internal waves in the Mediterranean](#)
  - <https://www.youtube.com/watch?v=x7GXLJQ2Zn0>

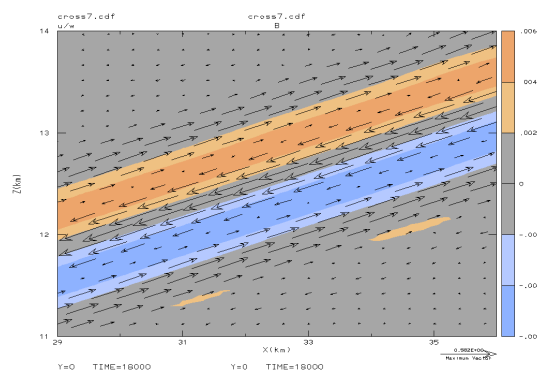
## Continuously Stratified Examples

Courses/ATMS 442/ATM 442 2018/Animations

- [St. Andrews Cross](#)



Positive (red) and negative (blue) buoyancy perturbations are plotted in a vertical plane

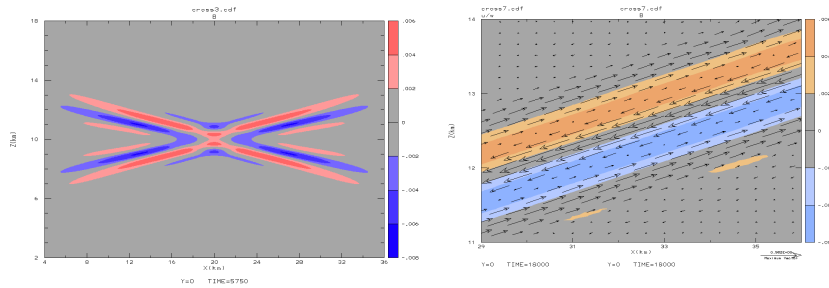


- Warm/cold colors = density/temperature
- Arrows = flow direction
- U and W in phase
- High/low co-located with maximum upward/downward flow

# Continuously Stratified Examples

Courses/ATMS 442/ATM 442 2018/Animations

- [St. Andrews Cross](#)



- [Strange weather \(clouds\)](#)
- [Extreme trapped waves 2 \(clouds\)](#)
  - Dale Durran
- [Internal gravity waves from a squall line](#)